

**RESEARCH PROJECT PARTICIPANTS: STUDENTS**

A questionnaire survey collected 646 responses from University Students of six institutions and the results focus on the personality traits of the participating students.

**STUDENTS' PERSONALITY TRAITS**

The ODLEP project is funded by I.K.Y., the Erasmus+ National Agency in Greece (**Erasmus+ Programme Cooperation Partnership in Higher Education Key Action 2, Project reference No: 2022-1-EL01-KA220-HED-000089152**). Self-reported personality traits of students were measured on a scale assessing the Five Personality Factors of the Big Five Model and more specifically **extraversion, conscientiousness, agreeableness, neuroticism and openness to experience**. **Extraversion** describes dimensions such as Warmth/Heartedness, Sociability and Assertiveness, Activity, Thrill-Seeking and Positive Emotions. **Neuroticism** summarizes characteristics such as anxiety, hostility, depression, self-consciousness, impulsivity and vulnerability. **Openness to Experience** includes characteristics such as Imagination, Aesthetics, Actions, Ideas and Values. **Agreeableness** refers to Trust, Directness/Sensitivity, Altruism, Conformity, Modesty and Sensitivity. Finally, **Conscientiousness** describes Competence, Orderliness, Conscientiousness, Ambition, Self-Discipline and Thoughtfulness. Table 1 below summarizes the characteristics of the participants. Values range from 0-5, and higher values indicate the higher presence of the specific characteristic.

	AGREEABLENESS	EXTRAVERSION	NEUROTICISM	OPENNESS TO EXPERIENCE	CONSCIENTIOUSNESS
<b>Mean</b>	3,3968	3,2807	2,5878	3,6833	3,7946
<b>Minimum</b>	2,00	1,67	1,00	1,95	1,80
<b>Maximum</b>	4,83	4,67	4,88	4,95	5,00

Table 1. Students' Personality Traits

The statistics highlight the personality traits, which describe the students, from the most representative trait to the least: Conscientiousness, Openness to Experience, Agreeableness, Extraversion and finally Neuroticism. It is interesting to note that considering the maximum values, several students had perfect scores in openness to experience and conscientiousness. Conscientiousness and Openness to Experience are the top two traits in both Instructors and Students. The only difference is that in the case of Students, Extraversion and Agreeableness have mutually changed places in comparison to Instructors traits. Frequencies of the most dominant Conscientiousness trait are presented in the Figure 1 below:

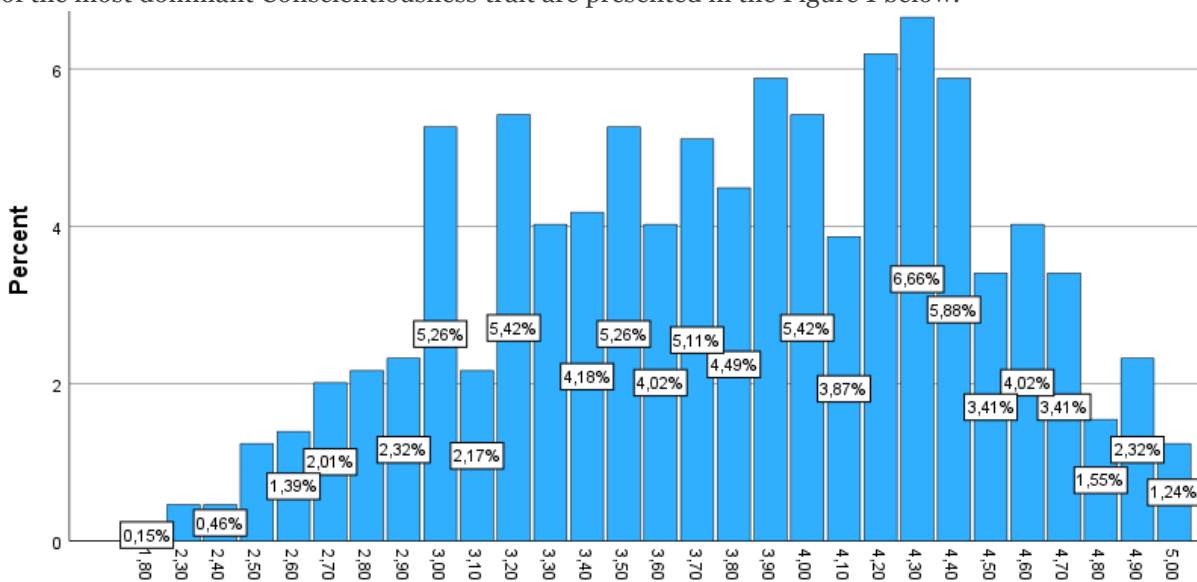


Figure 1. Frequencies of Conscientiousness Trait Scores



**ODLEP PROJECT WEBSITE**