

ODLEP SURVEY HIGHLIGHTING GREEK INSTRUCTORS' PERSONALITY TRAITS

RESEARCH PROJECT PARTICIPANTS: INSTRUCTORS
A questionnaire survey collected 136 responses from University Instructors – Faculty Members of Greek Universities and the results focus on the personality traits of the participating Instructors.

The ODLEP project is funded by I.K.Y., the Erasmus+ National Agency in Greece (**Erasmus+ Programme Cooperation Partnership in Higher Education Key Action 2, Project reference No: 2022-1-EL01-KA220-HED-000089152**). Self-reported personality traits of Greek University Faculty Members were measured on a scale assessing the Five Personality

Factors of the Big Five Model and more specifically **extraversion, conscientiousness, agreeableness, neuroticism and openness to experience**. **Extraversion** describes dimensions such as Warmth/Heartedness, Sociability and Assertiveness, Activity, Thrill-Seeking and Positive Emotions. **Neuroticism** summarizes characteristics such as anxiety, hostility, depression, self-consciousness, impulsivity and vulnerability. **Openness to Experience** includes characteristics such as Imagination, Aesthetics, Actions, Ideas and Values. **Agreeableness** refers to Trust, Directness/Sensitivity, Altruism, Conformity, Modesty and Sensitivity. Finally, **Conscientiousness** describes Competence, Orderliness, Conscientiousness, Ambition, Self-Discipline and Thoughtfulness. Table 1 below summarizes the characteristics of the Greek participating Faculty Members. Values range from 0-5, and higher values indicate the higher presence of the specific characteristic.

| | AGREEABLENESS | EXTRAVERSION | NEUROTICISM | OPENNESS TO EXPERIENCE | CONSCIENTIOUSNESS |
|----------------|---------------|--------------|-------------|------------------------|-------------------|
| Mean | 3,5113 | 3,6059 | 2,4682 | 3,7038 | 3,9703 |
| Minimum | 2,08 | 2,00 | 1,25 | 2,75 | 2,60 |
| Maximum | 4,50 | 4,67 | 4,13 | 4,80 | 4,90 |

Table 1. Greek Faculty Members Personality Traits

Descriptive statistics identified the personality traits, which describe the Greek Faculty Members participating in the ODLEP research survey, from the most representative trait to the least: Conscientiousness, Openness to Experience, Extraversion, Agreeableness, and finally Neuroticism. It is interesting to note that considering the maximum values, several faculty members had almost perfect scores in conscientiousness. The trait with the least scores is Neuroticism. Frequencies of all traits are presented in the Figures 1 to 5 below:

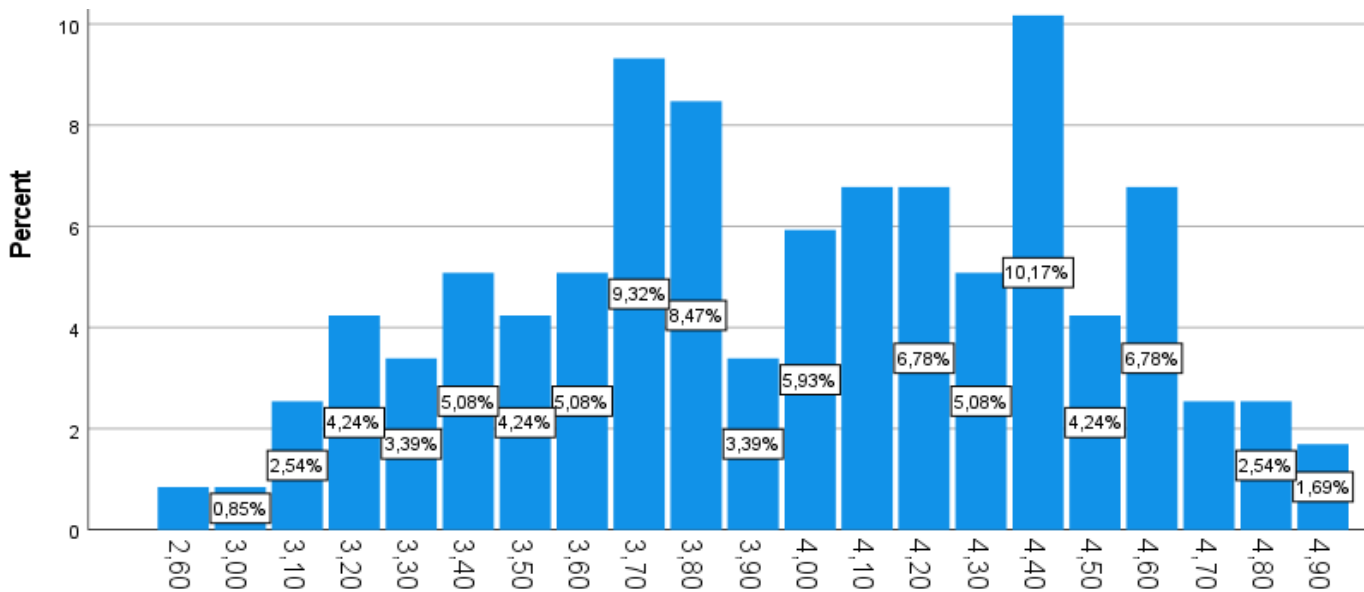


Figure 1. Frequencies Regarding **Conscientiousness** Trait Scores

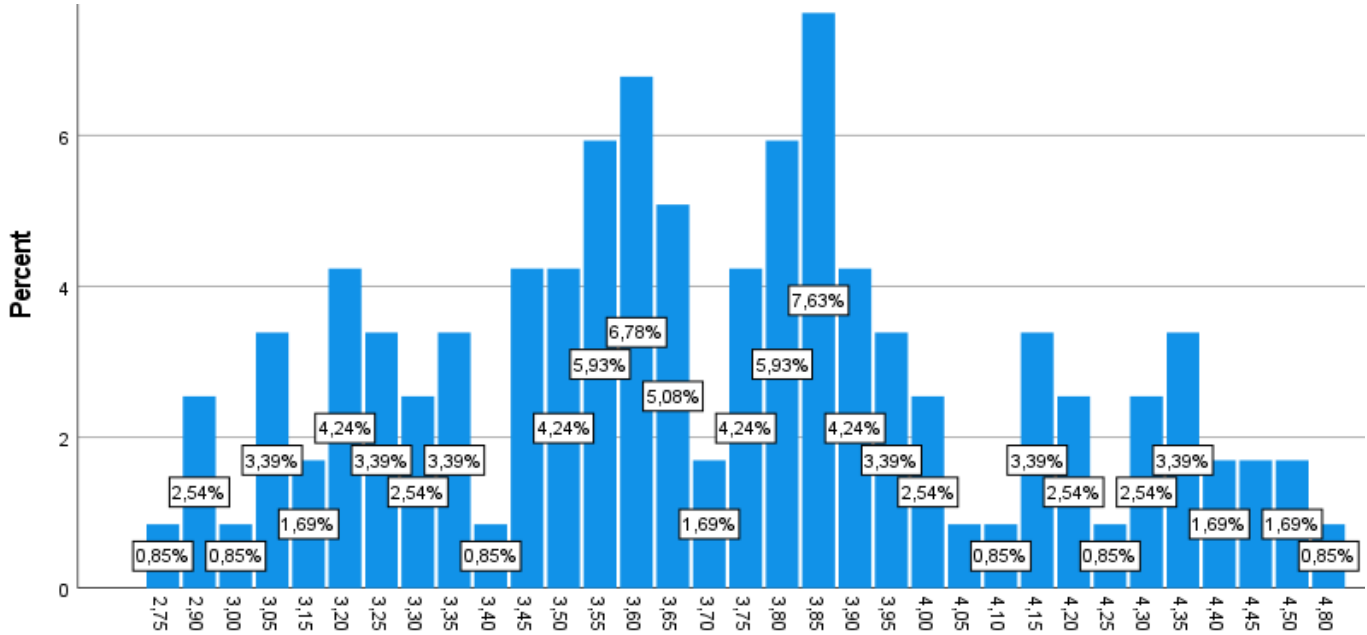


Figure 2. Frequencies Regarding **Openness to Experience** Trait Scores

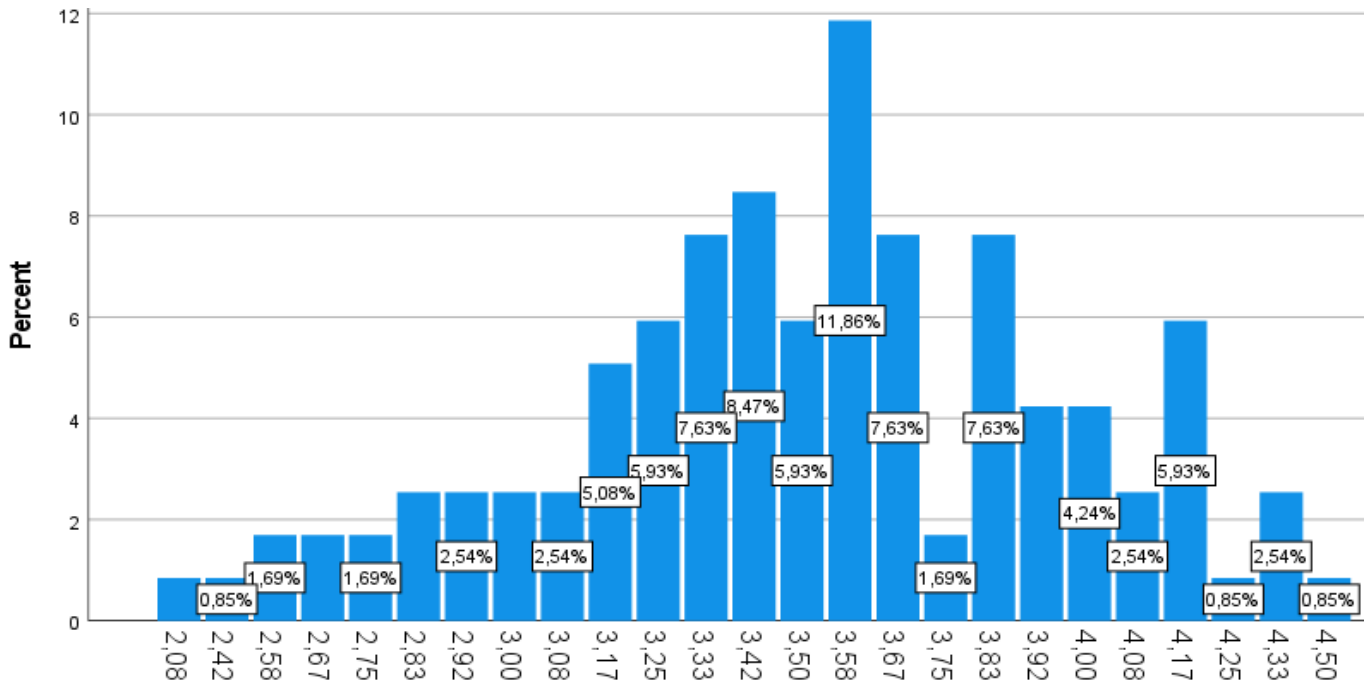


Figure 3. Frequencies Regarding **Agreeableness** Trait Scores

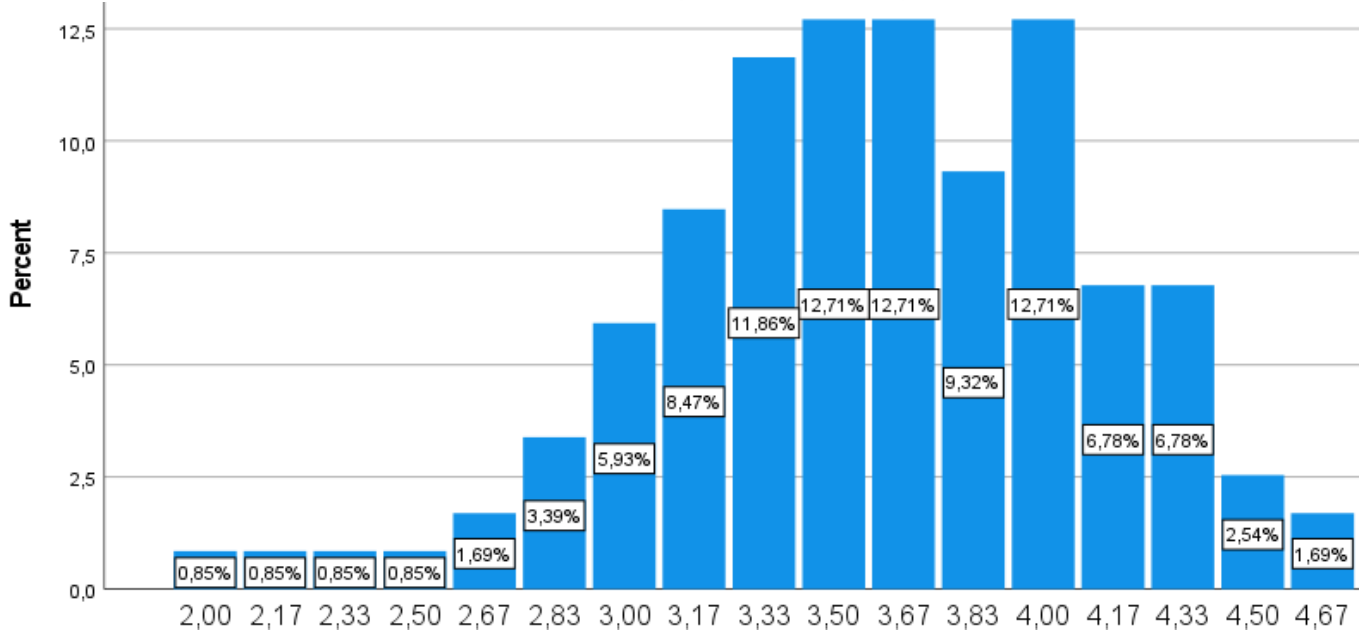


Figure 4. Frequencies Regarding **Extraversion** Trait Scores

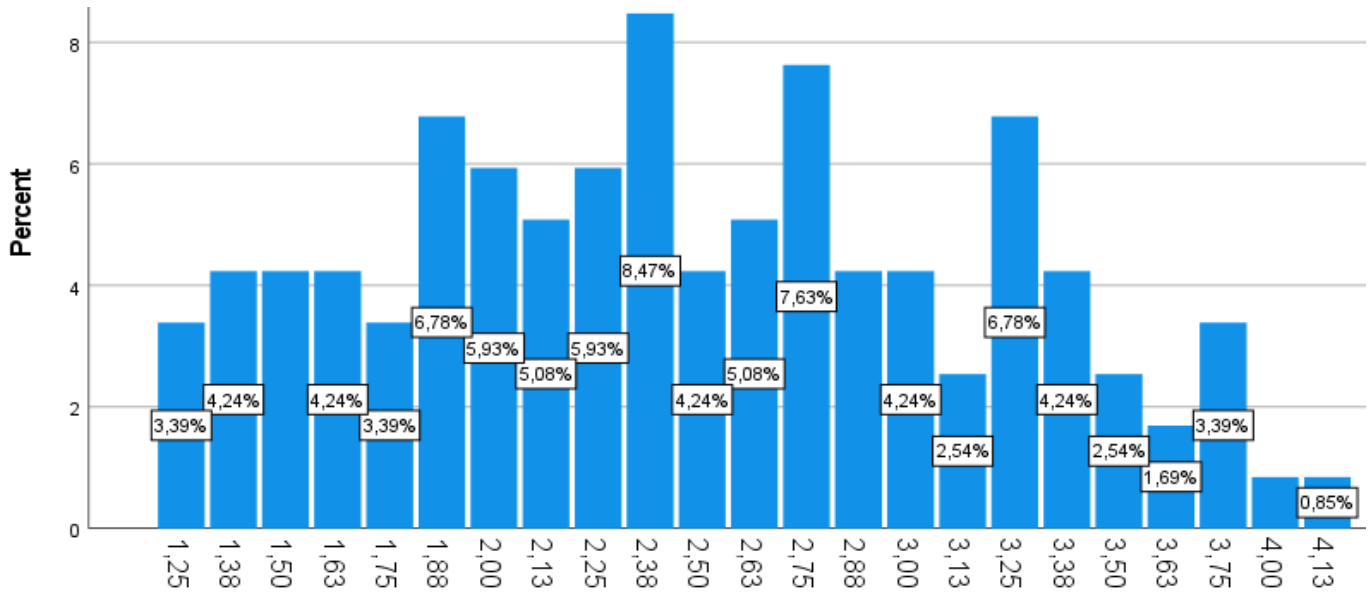


Figure 5. Frequencies Regarding **Neuroticism** Trait Scores



ODLEP PROJECT WEBSITE