

RESEARCH PROJECT PARTICIPANTS: ITALIAN STUDENTS

A questionnaire survey collected 222 responses from Italian University Students and the results focus on the personality traits of the participating Students.

ODLEP SURVEY: HIGHLIGHTING ITALIAN STUDENTS' PERSONALITY TRAITS

The ODLEP project is funded by I.K.Y., the Erasmus+ National Agency in Greece (Erasmus+ Programme Cooperation Partnership in Higher Education Key Action 2, Project reference No: 2022-1-EL01-KA220-HED-000089152). Self-reported personality traits of Italian University Students were measured on a scale assessing the Five Personality Factors of

the Big Five Model and more specifically **extraversion, conscientiousness, agreeableness, neuroticism and openness to experience**. Table 1 below summarizes the characteristics of the Italian University Students who participated in the survey. Values range from 0-5, and higher values indicate the higher presence of the specific characteristic.

| | AGREEABLENESS | EXTRAVERSION | NEUROTICISM | OPENNESS TO EXPERIENCE | CONSCIENTIOUSNESS |
|----------------|---------------|--------------|-------------|------------------------|-------------------|
| Mean | 3,4692 | 3,3979 | 2,7387 | 3,8718 | 3,9234 |
| Minimum | 2,25 | 1,67 | 1,13 | 2,15 | 1,80 |
| Maximum | 4,67 | 4,67 | 4,88 | 4,95 | 5,00 |

Table 1. Italian University Students Personality Traits

Descriptive statistics identified the personality traits, which describe the Italian University Students participating in the ODLEP research survey, from the most representative trait to the least: Conscientiousness, Openness to Experience, Agreeableness, Extraversion, and finally Neuroticism. It is interesting to note that considering the maximum values, several Students had perfect or almost perfect scores in “Conscientiousness” and “Openness to Experience”. The trait with the least scores is Neuroticism. Frequencies of all traits are presented in the Figures 1 to 5 below:

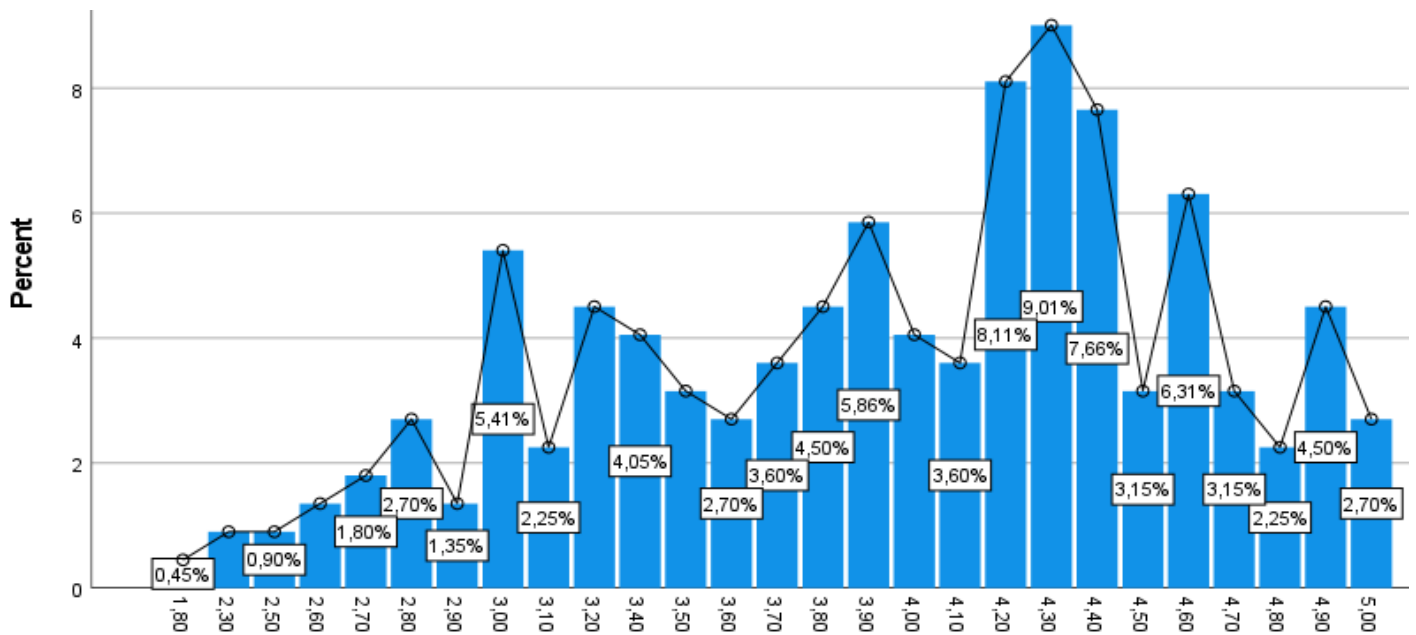


Figure 1. Frequencies Regarding **Conscientiousness** Trait Scores

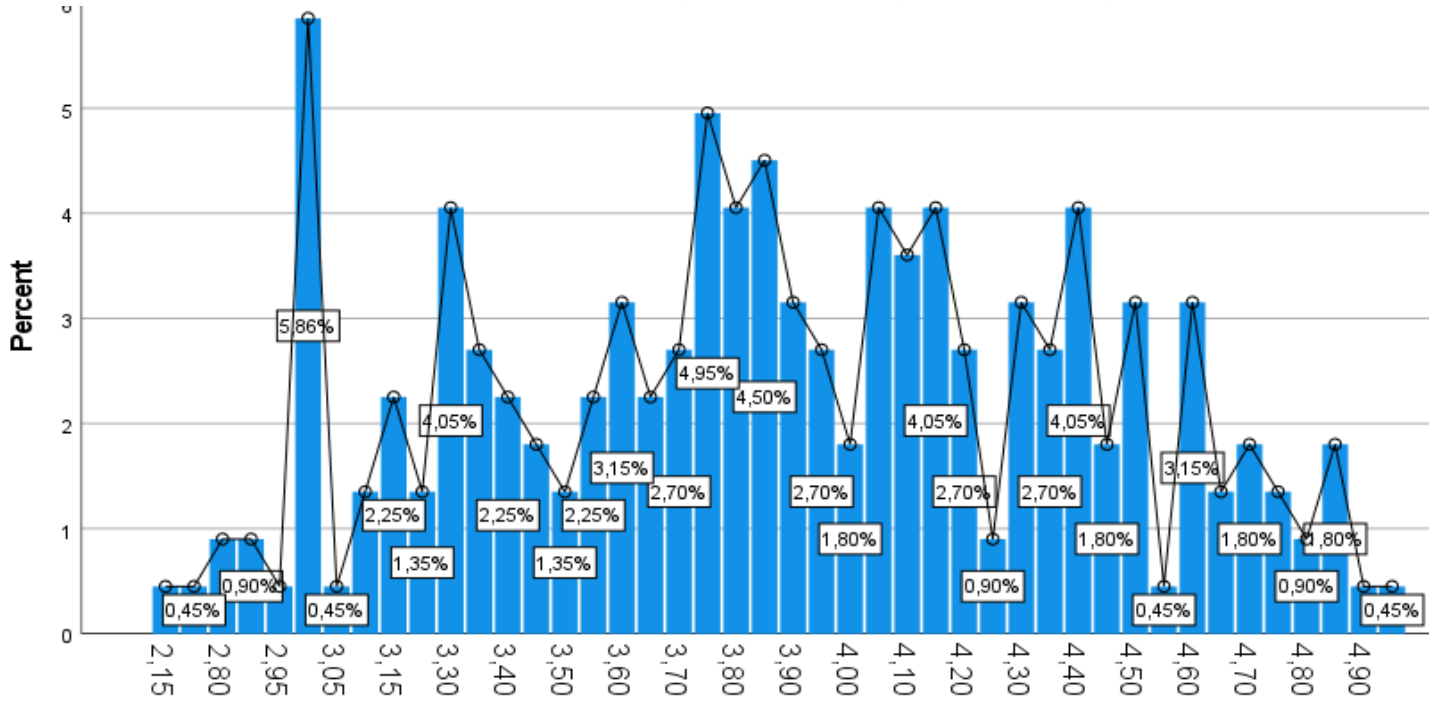


Figure 2. Frequencies Regarding **Openness to Experience** Trait Scores

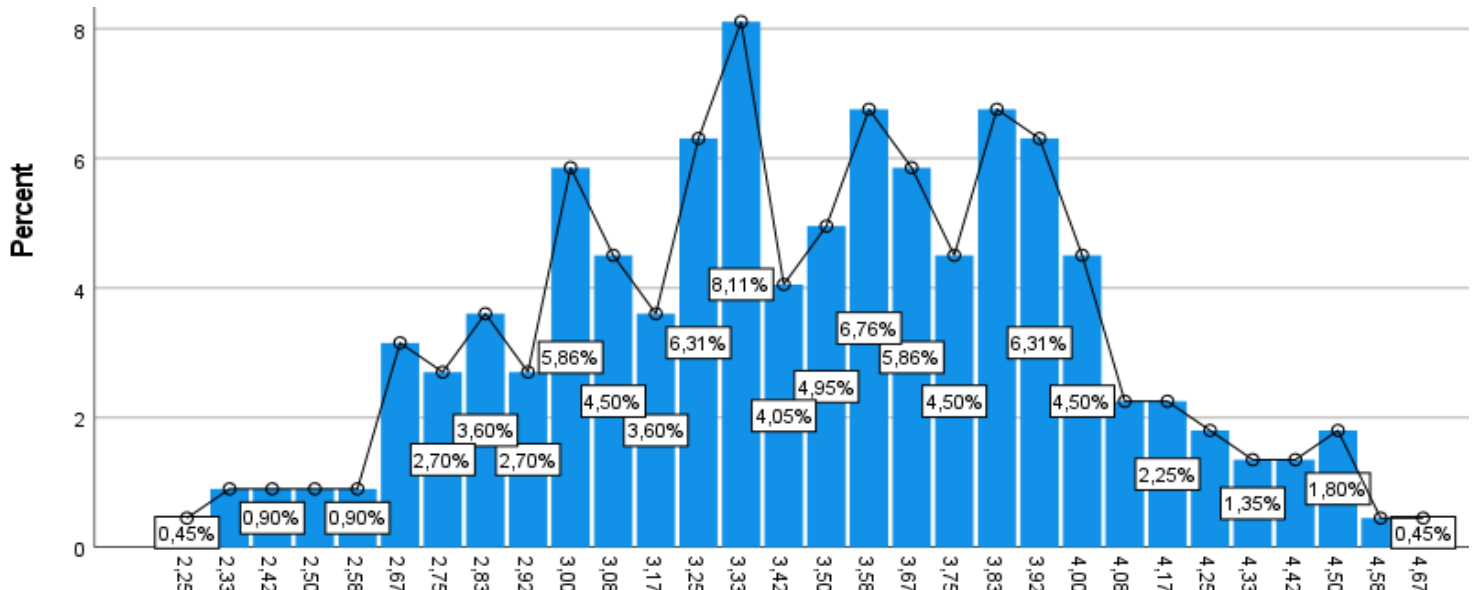


Figure 3. Frequencies Regarding **Agreeableness** Trait Scores

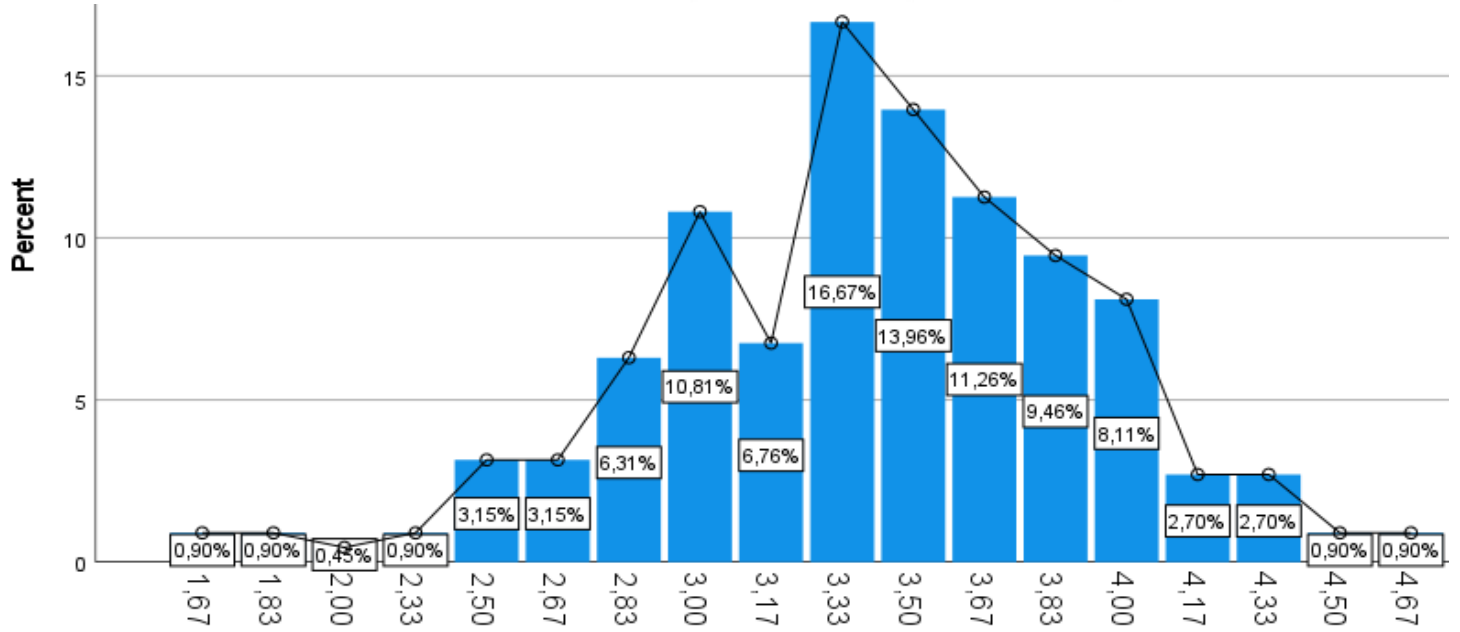


Figure 4. Frequencies Regarding **Extraversion** Trait Scores

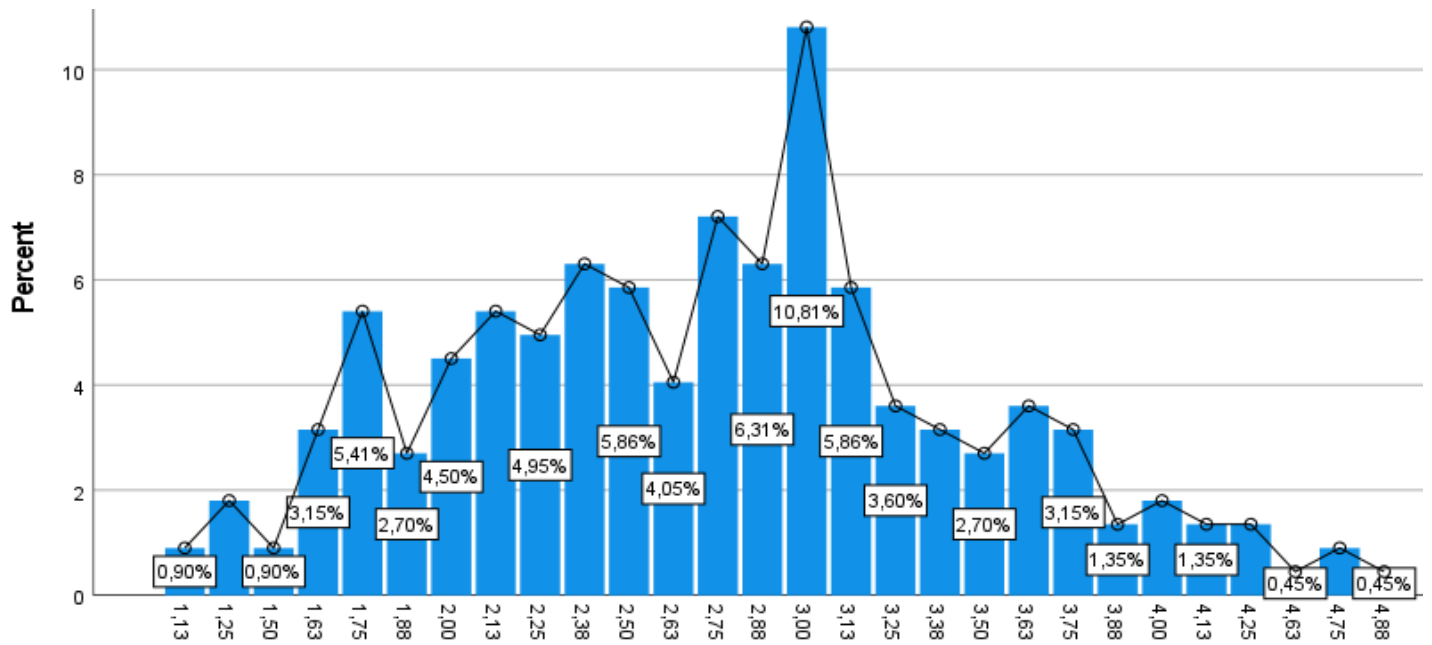


Figure 5. Frequencies Regarding **Neuroticism** Trait Scores



ODLEP PROJECT WEBSITE