

RESEARCH PROJECT PARTICIPANTS: SERBIAN FACULTY MEMBERS

A questionnaire survey collected 29 responses from Serbian Faculty Members and the results focus on the personality traits of the participating Instructors.

ODLEP SURVEY: IDENTIFYING SERBIAN FACULTY MEMBERS' PERSONALITY TRAITS

The ODLEP project is funded by I.K.Y., the Erasmus+ National Agency in Greece (Erasmus+ Programme Cooperation Partnership in Higher Education Key Action 2, Project reference No: 2022-1-EL01-KA220-HED-000089152). Self-reported personality traits of Serbian Faculty Members were measured on a scale assessing the Five Personality Factors of the Big Five Model and more specifically **extraversion**,

conscientiousness, agreeableness, neuroticism and openness to experience. Table 1 below summarizes the characteristics of the Serbian Faculty Members who participated in the survey. Values range from 0-5, and higher values indicate the higher presence of the specific characteristic.

	AGREEABLENESS	EXTRAVERSION	NEUROTICISM	OPENNESS TO EXPERIENCE	CONSCIENTIOUSNESS
Mean	3,4569	3,2816	2,0905	3,7603	4,1138
Minimum	2,17	1,00	1,13	2,20	2,60
Maximum	4,75	4,83	3,25	4,90	4,90

Table 1. Serbian Faculty Members' Personality Traits

Descriptive statistics identified the personality traits, which describe the Serbian Instructors participating in the ODLEP research survey, from the most representative trait to the least: Conscientiousness, Openness to Experience, Agreeableness, Extraversion, and finally Neuroticism. It is interesting to note that considering the maximum values, a number of Instructors had almost perfect scores in "Conscientiousness" and "Openness to Experience". The trait with the least scores is Neuroticism. Frequencies of all traits are presented in the Figures 1 to 5 below:

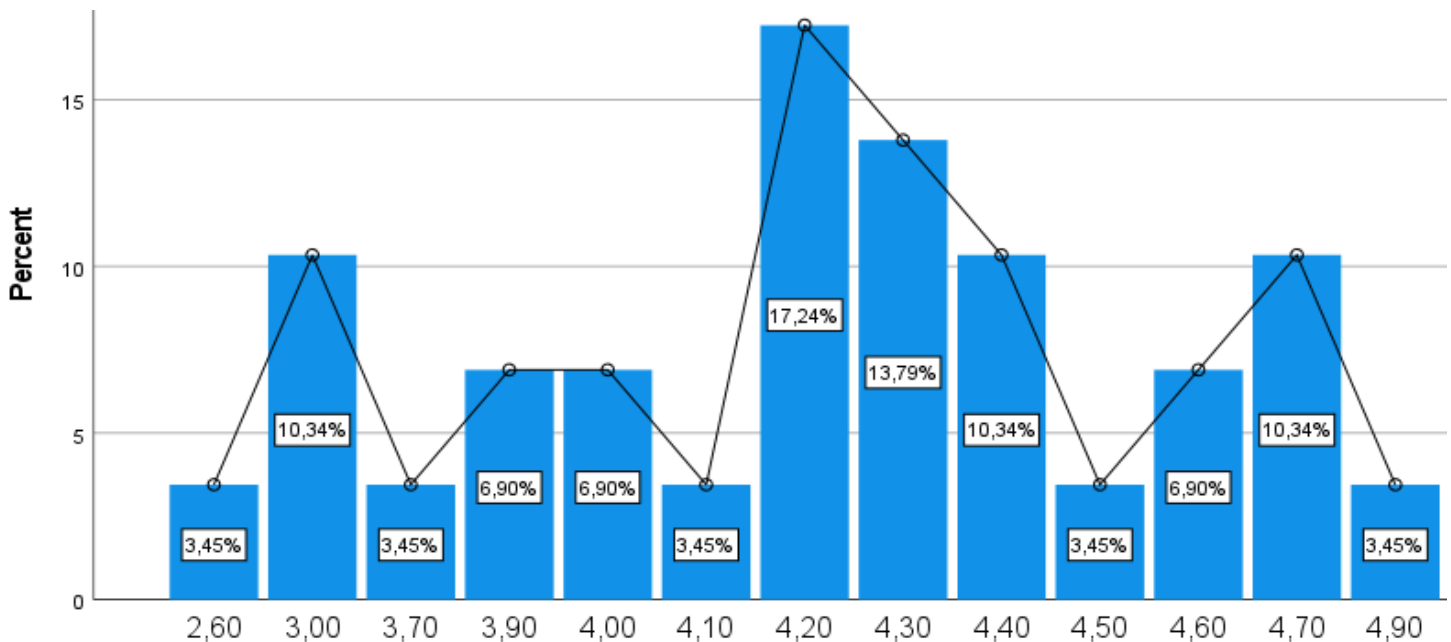


Figure 1. Frequencies Regarding **Conscientiousness** Trait Scores

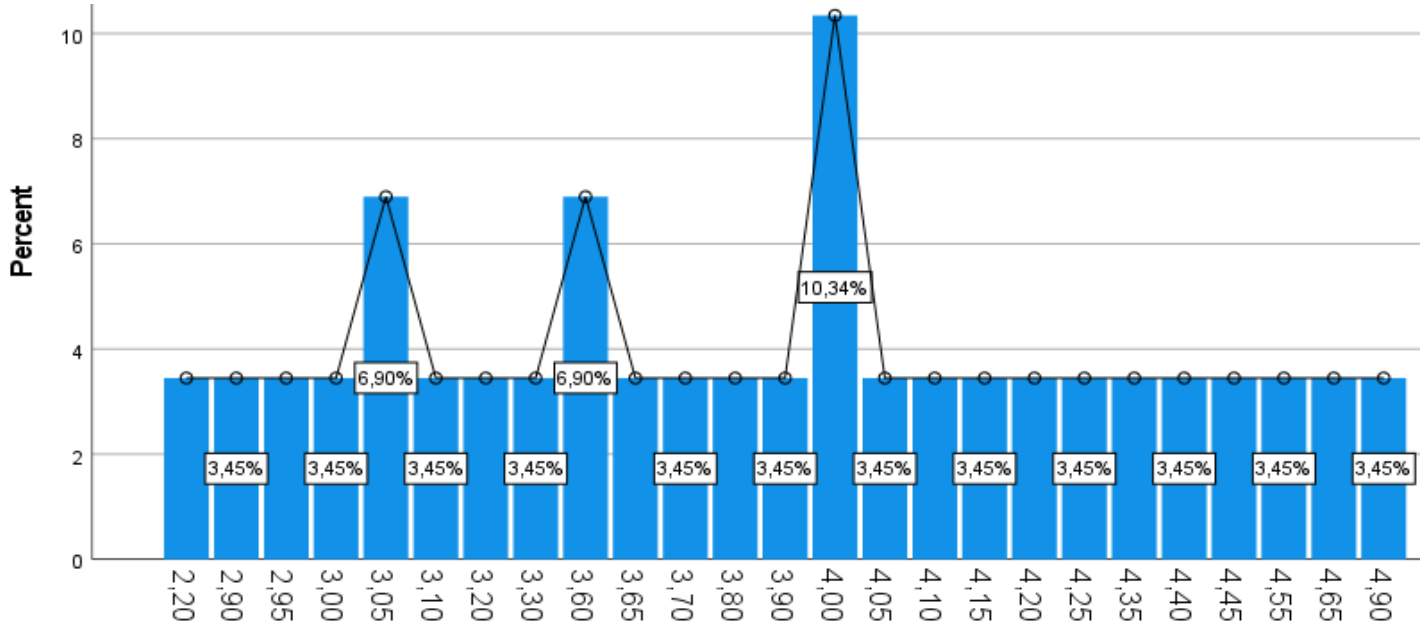


Figure 2. Frequencies Regarding **Openness to Experience** Trait Scores

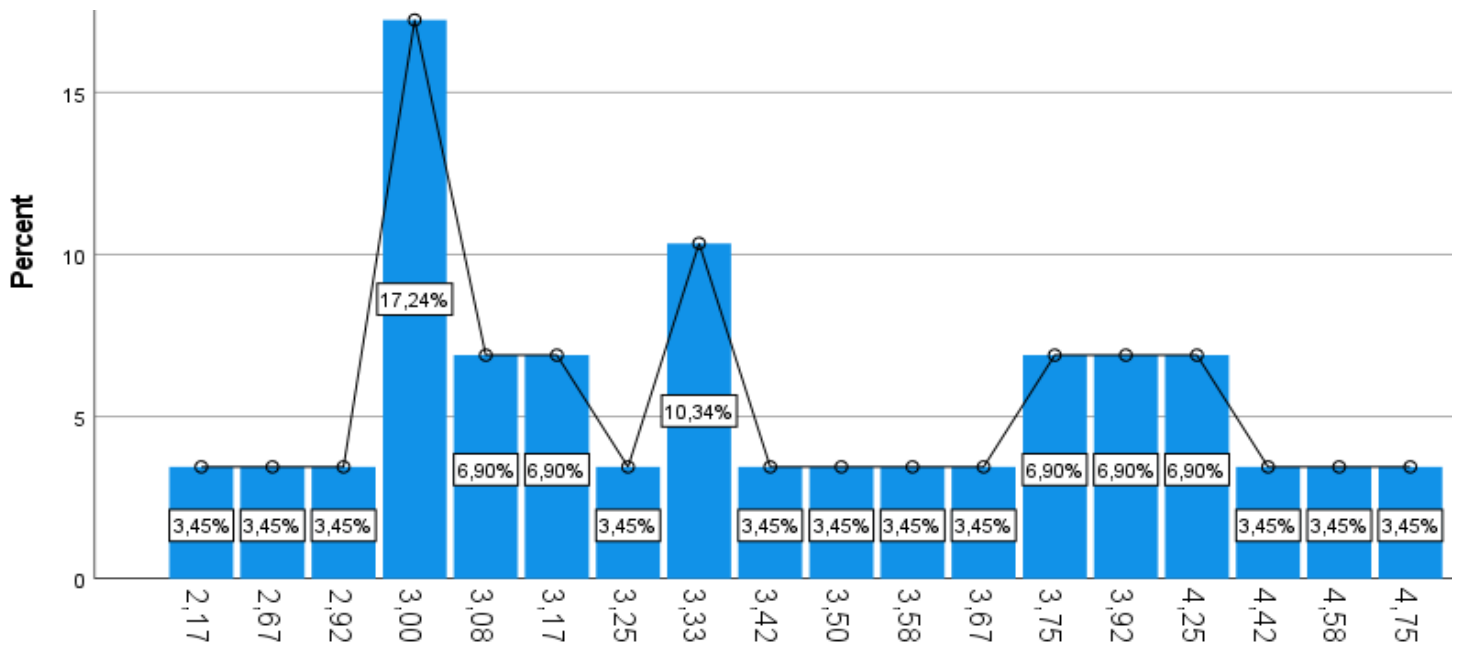


Figure 3. Frequencies Regarding **Agreeableness** Trait Scores

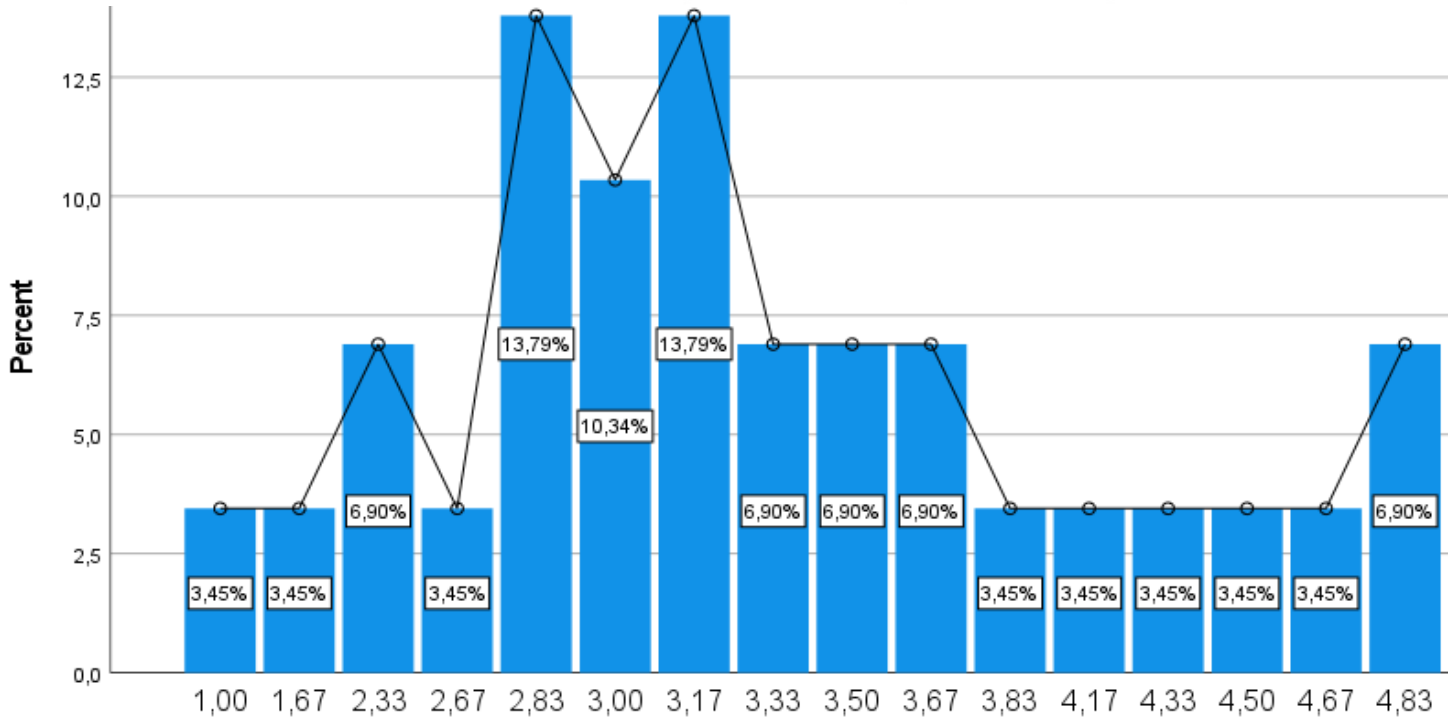


Figure 4. Frequencies Regarding **Extraversion** Trait Scores

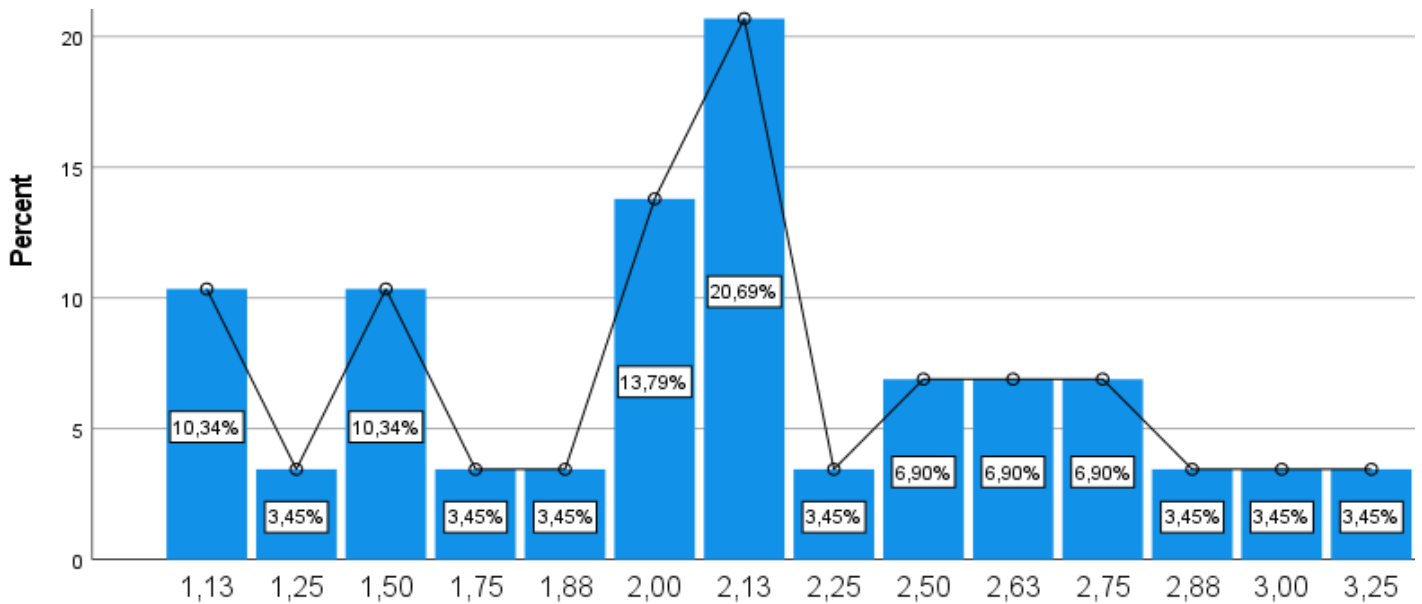


Figure 5. Frequencies Regarding **Neuroticism** Trait Scores



ODLEP PROJECT WEBSITE