

## ODLEP COURSE IMPLEMENTATION APPROACH

The ODLEP project is funded by I.K.Y., the Erasmus+ National Agency in Greece (**Erasmus+ Programme Cooperation Partnership in Higher Education Key Action 2, Project reference No: 2022-1-EL01-KA220-HED-000089152**). At the moment the six partners of the project are implementing the platform at respective courses within their institutions. This procedure follows a number of stages. The pillars for the implementation include the learning preferences, teaching preferences and personality characteristics. At the completion of the implementation, useful conclusions will be recorded along with the best practices. Partners will include in the platform various attributes in order to identify the ones that actually optimize the platform implementation and provide the best end results. The following two figures 1,2 present the whole proposed approach:

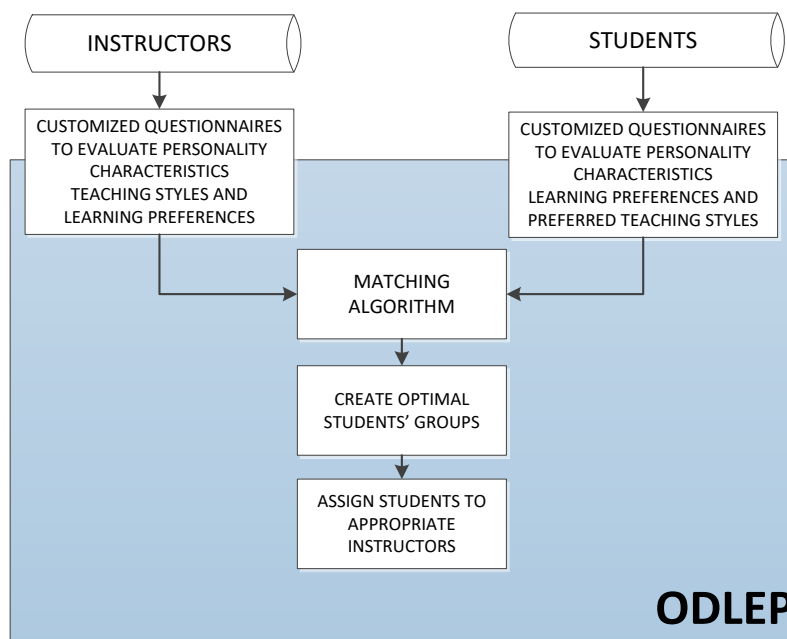


Figure 1. ODLEP General Function

Within the current approach groups of students will be created and assigned to instructors while recording the overall performance and instructors / students experience. The following Figure 2 graphically depicts the core approach and describes the processes / steps to be followed. Two instructors will be selected and assigned to deliver the lectures.

Instructors will be called to respond to the structured questionnaire survey especially prepared for the ODLEP project. Responses are translated into scores for personality traits, learning and teaching preference. These scores are the attributes considered by the platform in order to create the groups.

Course students are also called to respond to the focused questionnaire constructed especially for the students in the context of the ODLEP project. Responses are translated into scores for personality traits, preferred learning and teaching styles. These scores are the attributes considered by our platform in order to create the groups. The ODLEP algorithm will be implemented to produce the appropriate groups.

The course students will be divided into two groups and are assigned to the corresponding two instructors. The two groups of students will be presented the same educational subjects by the two instructors. Then the two groups of students will be provided with a new structured questionnaire survey that will be recording their experience and their views on the learning experience. Similarly, the instructor will be provided with a corresponding questionnaire to record his experience and his /her views regarding the performance of the group. It is worth mentioning that during the implementation of the platform, different approaches will be selected regarding the attributes to be considered for the matching process, learning preferences, or teaching preferences, or personality traits or even all the attributes and combinations. Along with the created groups it is in the interest of the partners to also arrange for control groups where this is applicable. The approach in detail is summarized in the following Figure 2:

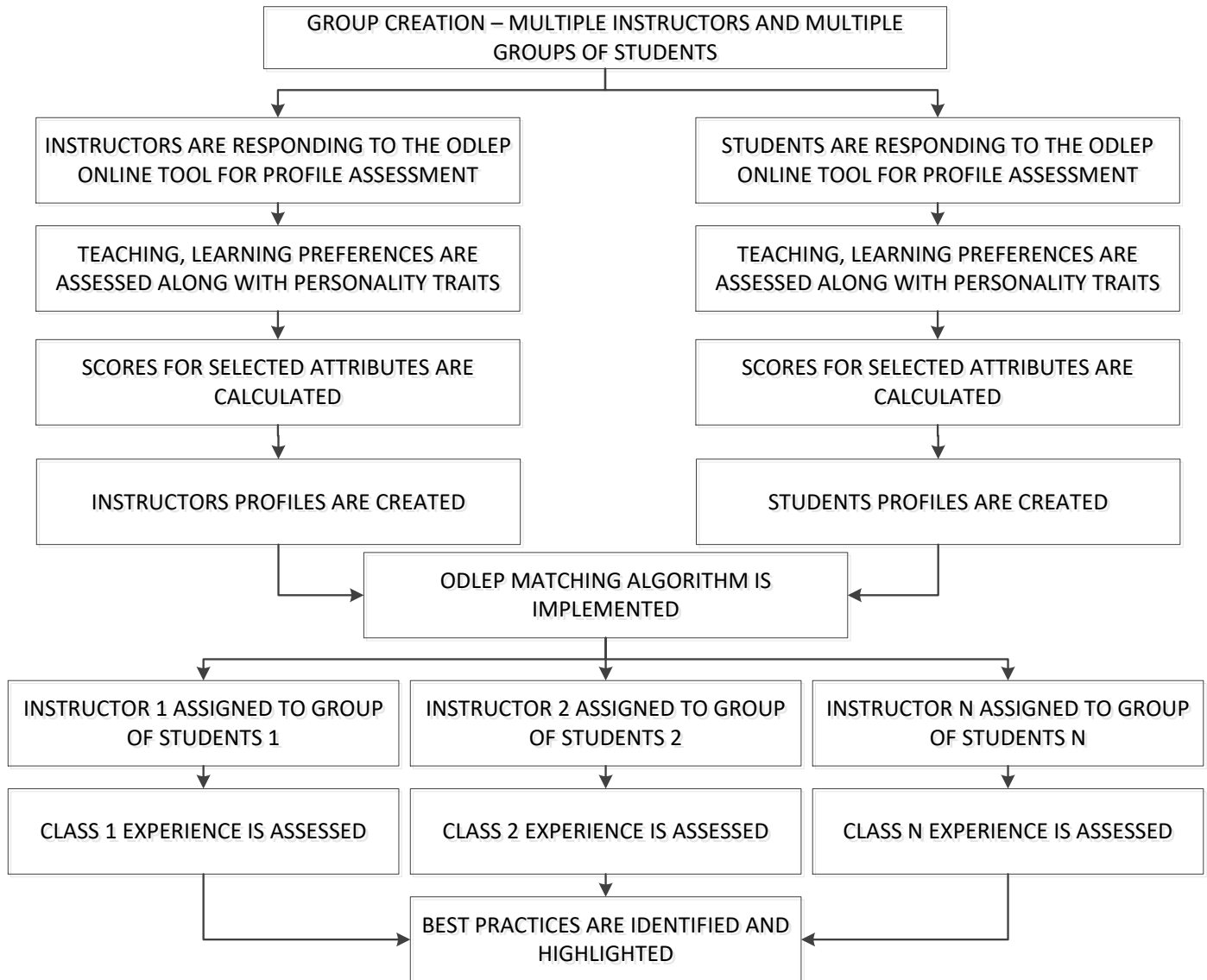


Figure 2. ODLEP Detailed Implementation and Associated Parameters