

ODLEP COURSE IMPLEMENTATION AND QUESTIONNAIRE RESPONSES

The ODLEP project is funded by I.K.Y., the Erasmus+ National Agency in Greece (**Erasmus+ Programme Cooperation Partnership in Higher Education Key Action 2, Project reference No: 2022-1-EL01-KA220-HED-000089152**). At the moment, the six partners of the project are implementing the platform at respective courses within their institutions. This procedure follows a number of stages. The first step was to customize and adapt the questionnaires to the needs of the course implementation approach. The questionnaires include learning and teaching preferences and also a personality traits self – assessment test. All partners are disseminating the questionnaires basically through google forms recording all data and responses.

The effort to implement the ODLEP platform has produced significant feedback. Currently, the approach has collected a plethora of responses. The questionnaires were forwarded to students and professors / instructors. The approach which is ongoing, has 12 participating professors and 268 students. The approach is being implemented in courses both postgraduate and undergraduate and at the same time, in person and long distance. Partners implementing the platform, are designing the attributes and criteria to use for the group formation.

All approaches are focusing on creating equal groups of students. Furthermore, in some cases the approach includes also control groups. The following Figure 1 presents through a flowchart the stages for the creation of the appropriate groups.

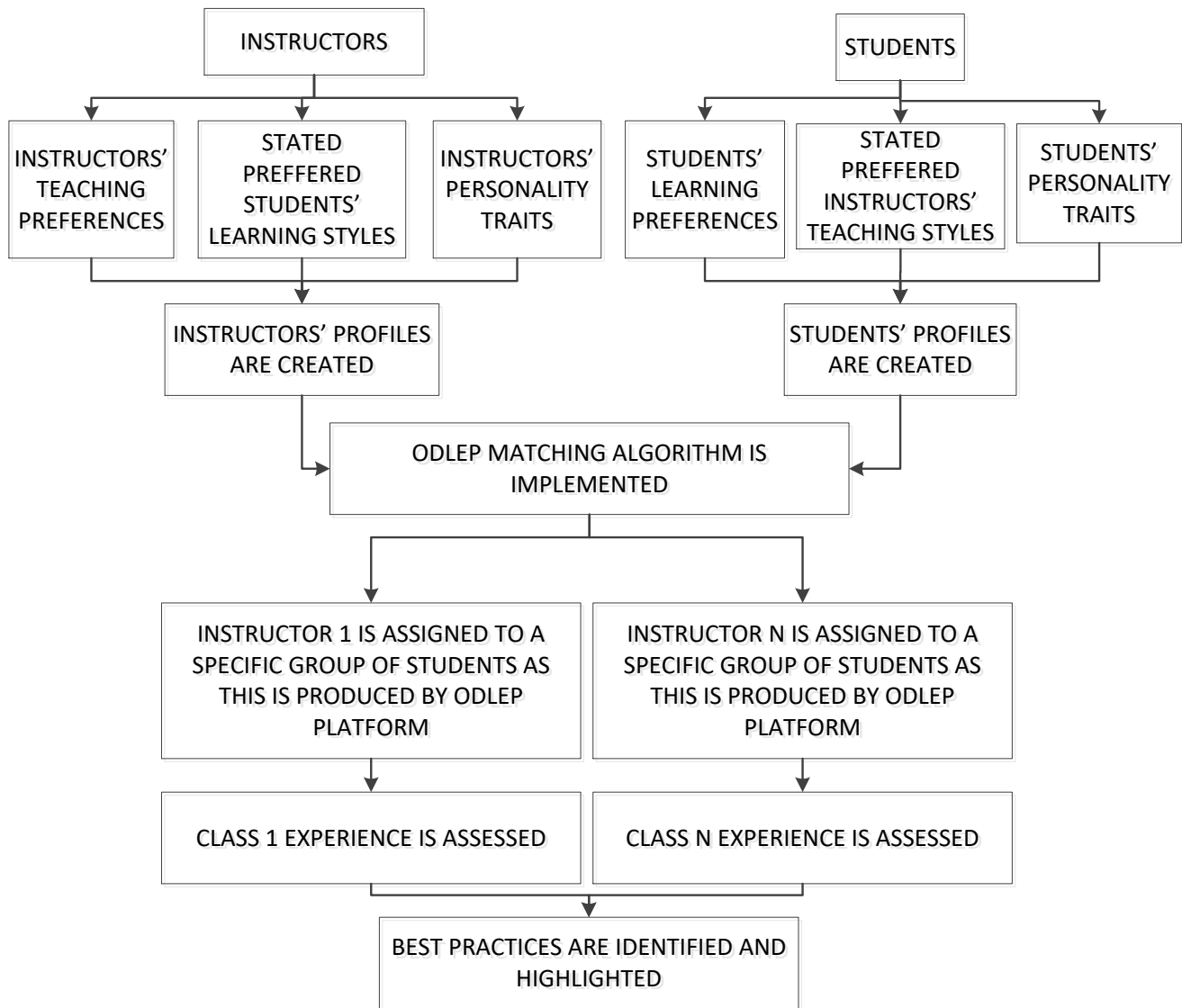


Figure 1. Detailed Flowchart of ODLEP’s Approach