

ODLEP AT THE 5TH NATIONAL CONFERENCE OF GREEK CIVIL ENGINEERING STUDENTS

Students' Personality Traits

On March 29th, 2025 ODLEP project was presented at the 5th National Conference of Greek Civil Engineering Students. A number of selected research findings were presented that focused on the responses of the project questionnaire. The findings are based on the profile of the Greek students as viewed through their personality traits. The latter are assessed through the ODLEP questionnaire and consider the Big-Five personality traits. At this stage of ODLEP implementation, 527 responses were collected from Greek students. The results are presented in the following figures 1 - 5:

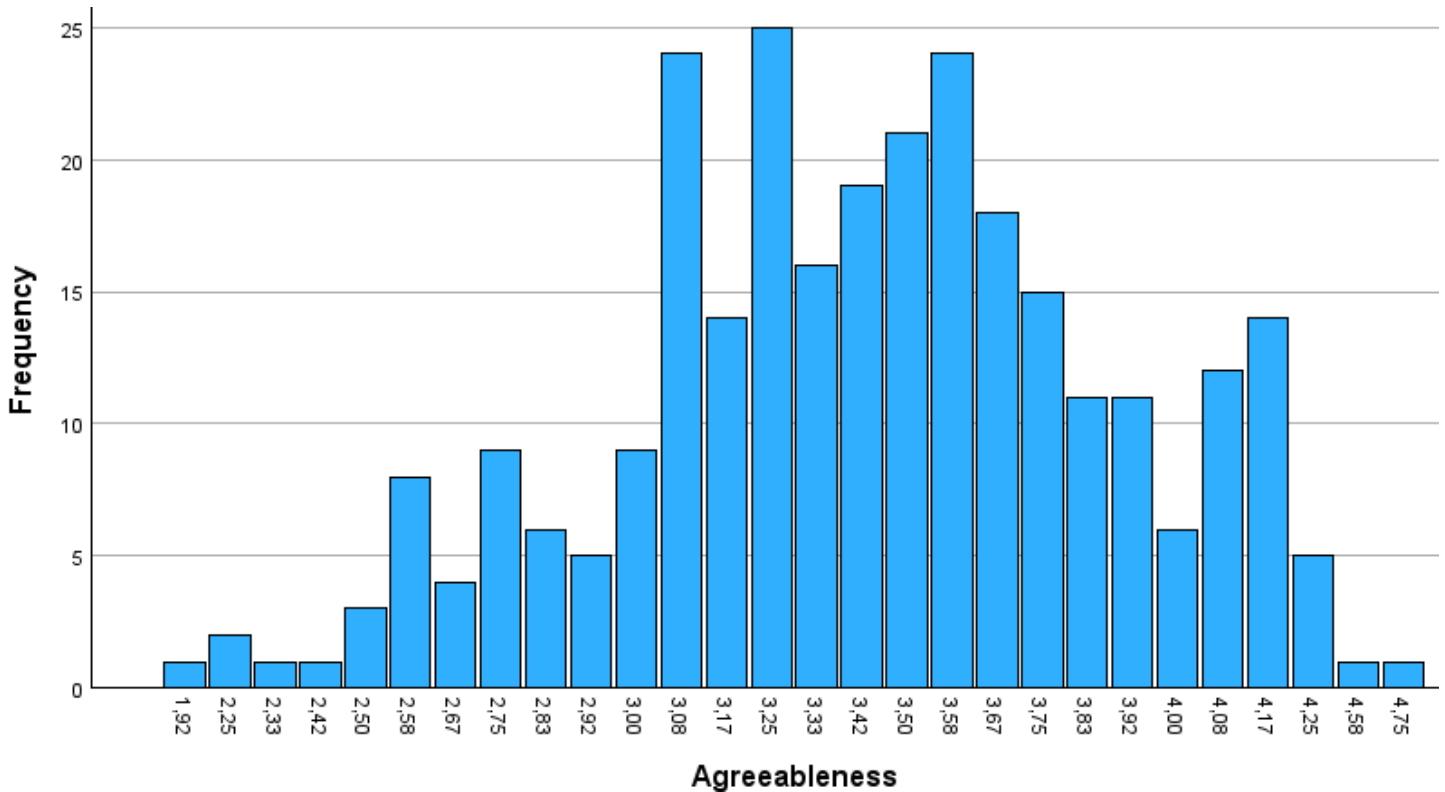


Figure 1: A Bar Chart Regarding the Students' "Agreeableness" Trait

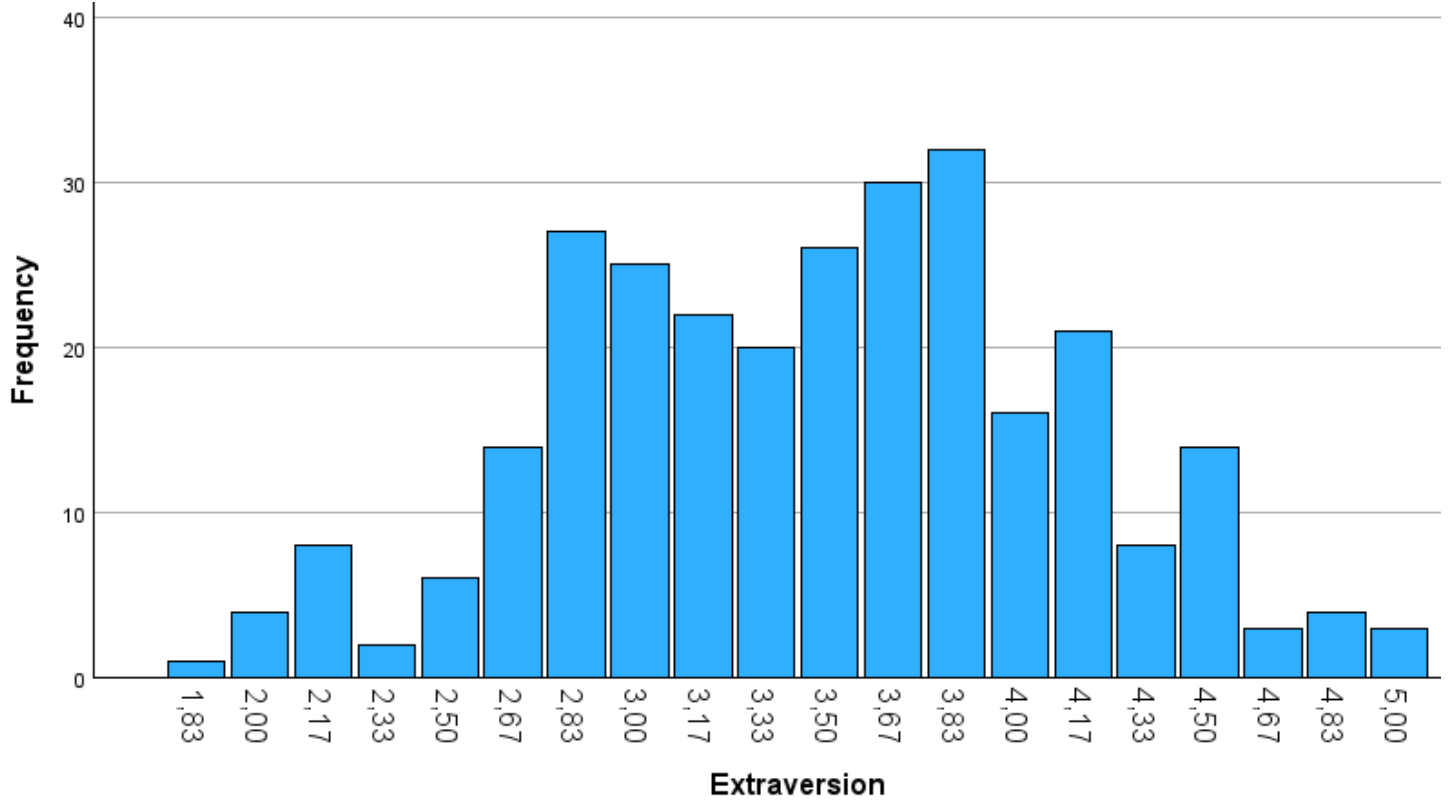


Figure 2: A Bar Chart Regarding the Students' "Extraversion" Trait

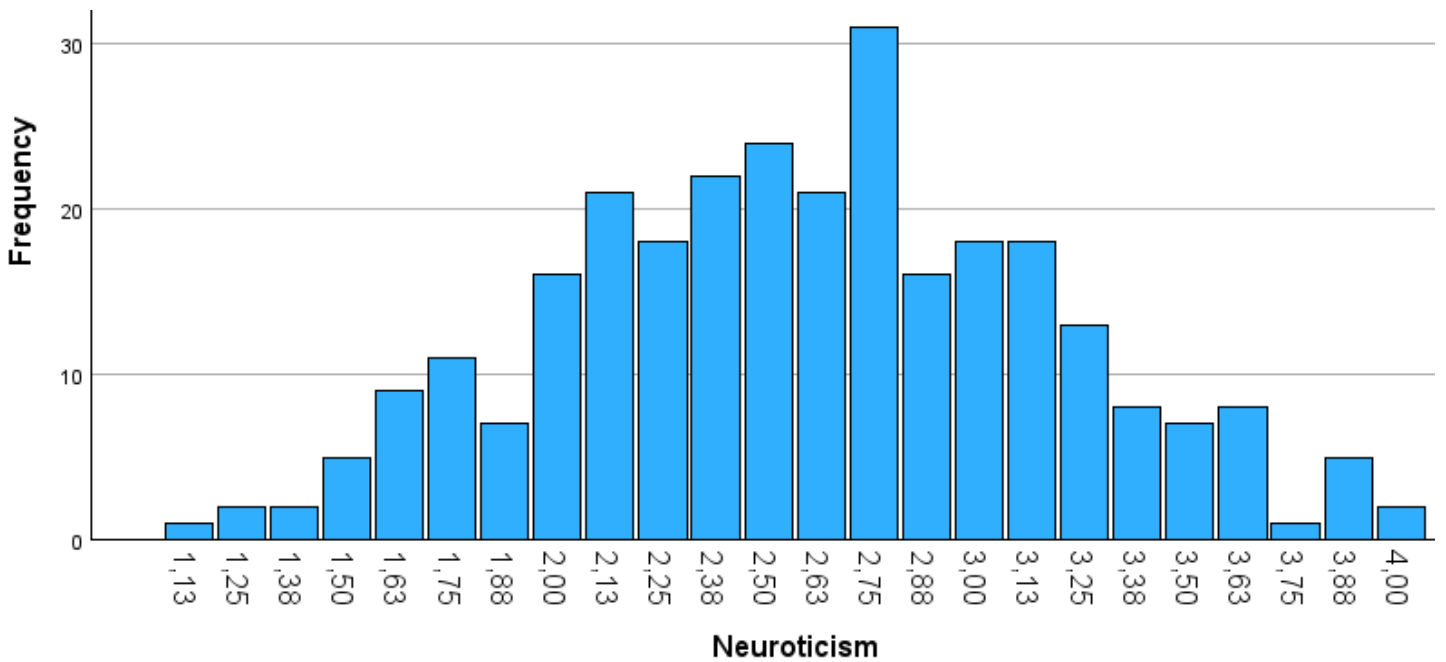


Figure 3: A Bar Chart Regarding the Students' "Neuroticism" Trait

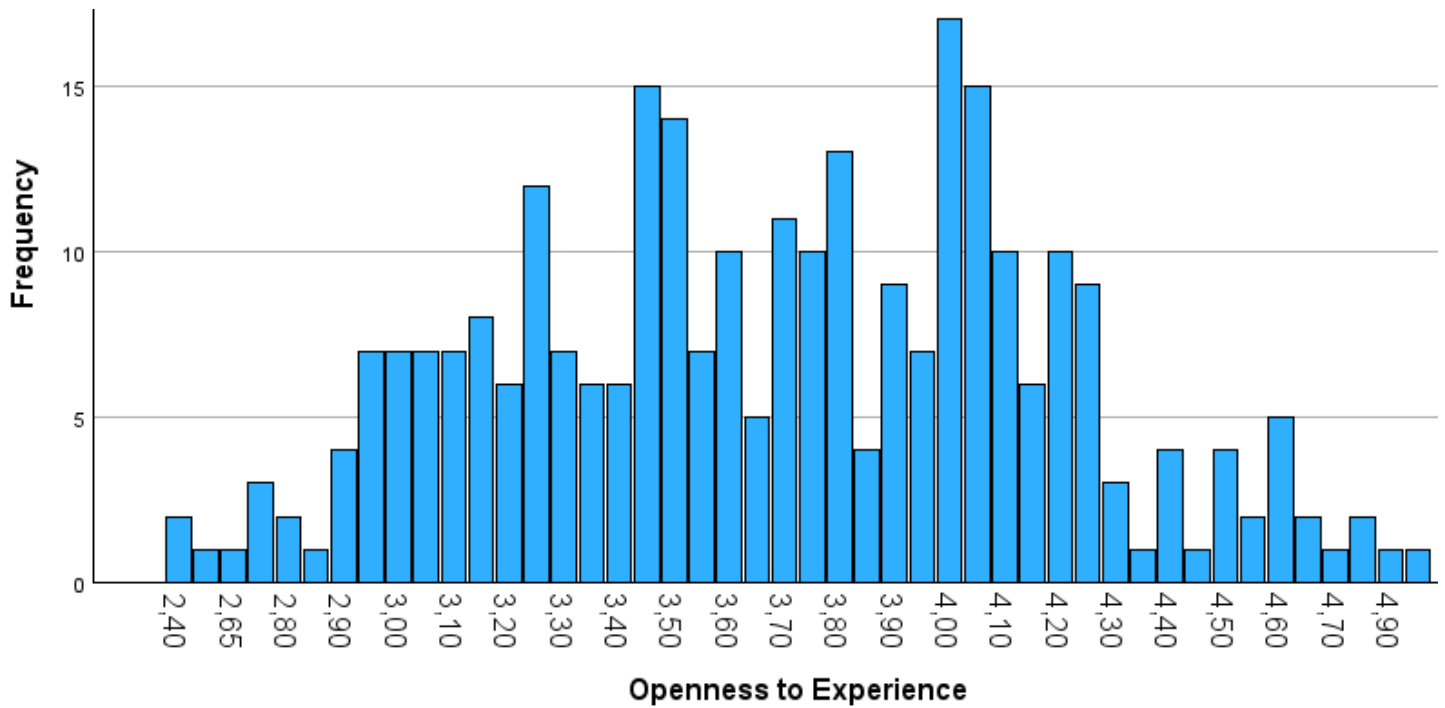


Figure 4: A Bar Chart Regarding the Students' "Openness to Experience" Trait

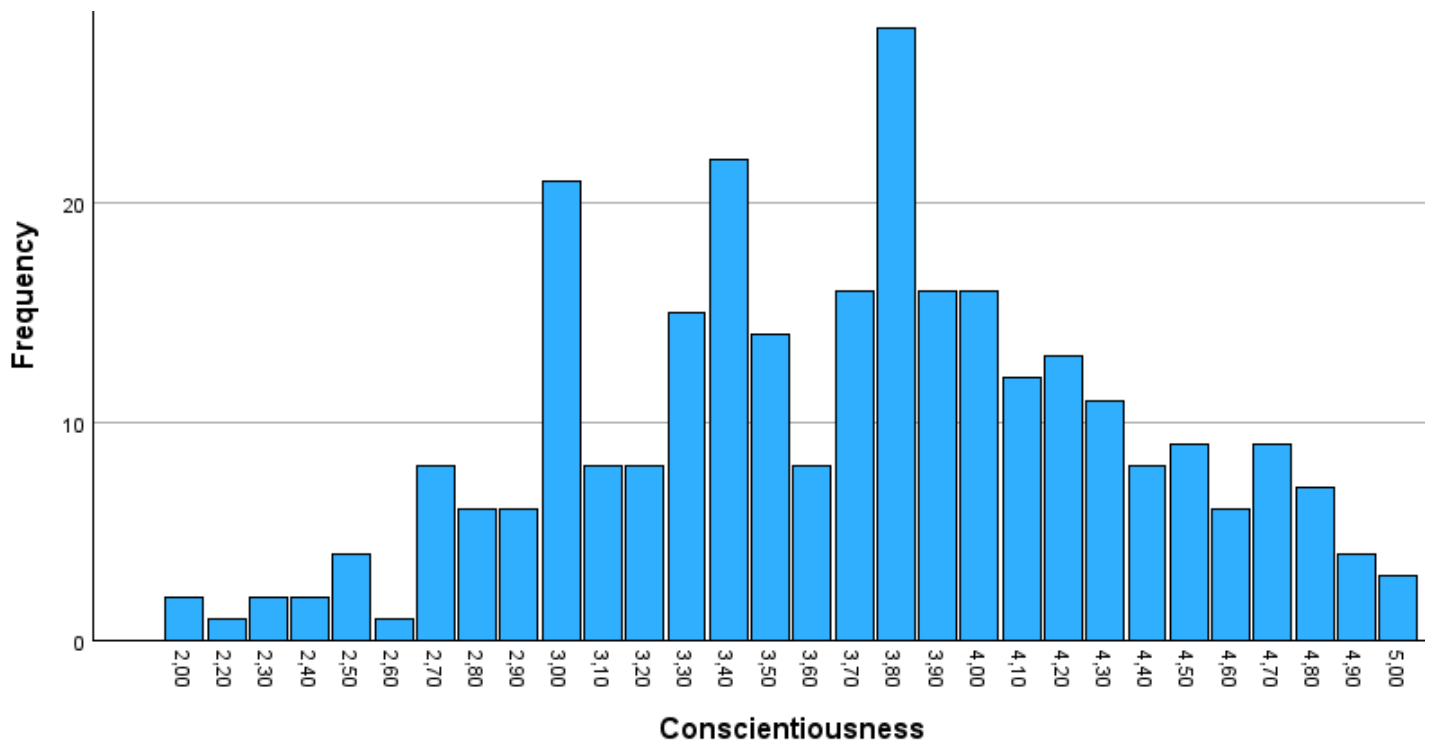


Figure 5: A Bar Chart Regarding the Students' "Conscientiousness" Trait

The median and mode values of the responses are presented in the following Table 1:

	Agreeableness	Extraversion	Neuroticism	Openness to Experience	Conscientiousness
Median	3,42	3,5	2,63	3,7	3,7
Mode	3,25	3,83	2,75	4,0	3,8

Table 1: Median and Mode Values of the Personality Traits

From Table 1, and especially from the mode values, it becomes obvious that the students score very high in “Openness to Experience” and high enough in “**Conscientiousness**” and “**Extraversion**”, and especially low in “**Neuroticism**” which is a very positive finding.